

MARINE DEBRIS: CURRENT & FUTURE SOLUTIONS

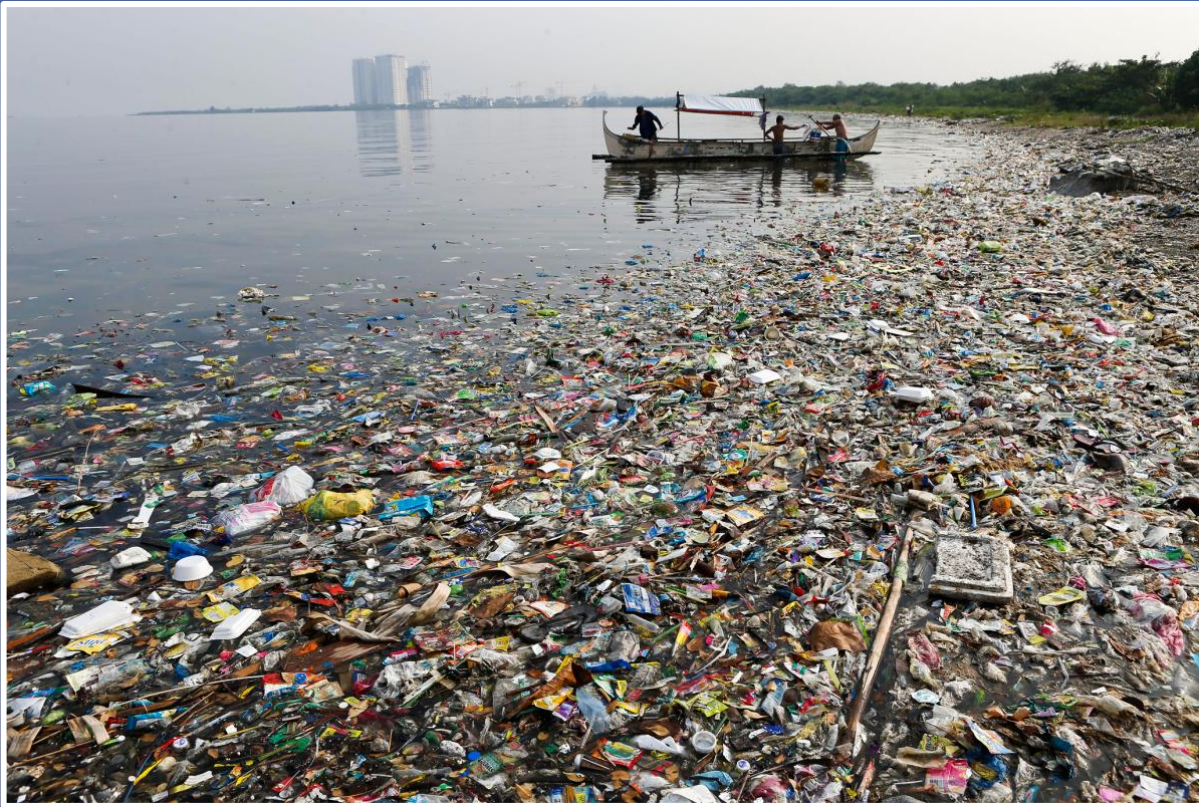


A Prickly Topic





HOW BIG A PROBLEM?



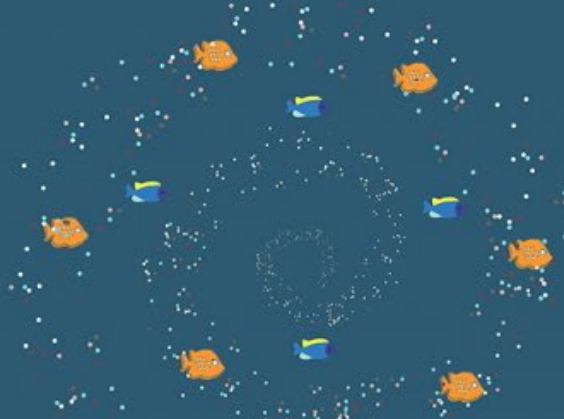
SERIOUSLY, A BIG PROBLEM

SNAPSHOT OF THE PLASTIC PROBLEM

- 18 billion pounds of plastic waste flows into the oceans every year from coastal regions
- 40 percent of plastic produced is packaging, used just once and then discarded
- Nearly half of all plastic ever manufactured has been made since 2000
- Less than a fifth of all plastic is recycled globally
- The United States recycles just 9 percent of its plastic trash

Source: National Geographic

PLASTICS IN THE OCEAN



MICROPLASTICS

Microplastics are small plastics less than 5mm. They can come from large plastics breaking down, or can be produced as small plastics such as microbeads, which can be found in products such as toothpaste and face wash.



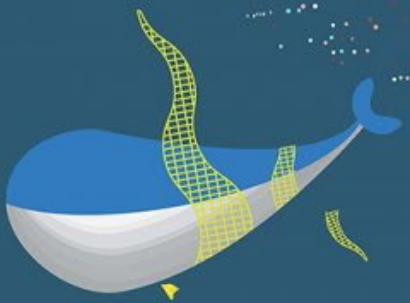
BOATS/NETS

Fishing gear can become marine debris when it is lost or abandoned.



INGESTION

Animals can easily mistake plastic debris for food.



ENTANGLEMENT

Marine life can get caught and killed in derelict fishing nets and other plastic debris.



RAIN & WINDS

Rain and wind can sweep debris into nearby waterbodies.



LITTERING

Intentional littering or improper disposal of trash can cause marine debris.



STREAMS & STORM DRAINS

Streams and storm drains can carry debris directly into the ocean or Great Lakes.



<https://marinedebris.noaa.gov/>



HOW LONG UNTIL IT'S GONE?

Estimated decomposition rates of common marine debris items



Estimated individual item timelines depend on product composition and environmental conditions.

OUR PANEL TODAY



William Jackson
Vice President and CTO
Bemis



Adrienne Tipton
Vice President, Innovation and Market Development
Novolex



Bob Lilienfeld
Vice President, Marketing & Sustainability
BioLogiQ